

25  
YEARS

SINCE 1996



# Work from Home





- \* AN 70 MESH
- \* Fabric Upholstered Cushioned Seat
- \* Single Lock Syncro Mechanism
- \* Height Adjustable Armrest with polyurethane Pad
- \* Powdercoated Steel Base

OPR-820



- \* M-01 MESH
- \* Fabric Upholstered Cushioned Seat
- \* Single Lock Syncro Mechanism
- \* Height Adjustable Armrest with polyurethane Pad
- \* Powdercoated Steel Base

OPR-810



Lumbar Adjustment



OPR-792

- \* AN-70 MESH
- \* Fabric Upholstered Cushioned Seat
- \* Single Lock Syncro Mechanism
- \* Height Adjustable Armrest with polyurethane Pad
- \* Powdercoated Steel Base



OPR-823

- \* Mesh Fabric for the Back
- \* Jute Fabric Upholstered Cushioned Seat.
- \* Single Lock Syncro Mechanism.
- \* Height Adjustable Armrest with polyurethane pad.
- \* Powdercoated Steel Base.



- \* AN-70 MESH
- \* Fabric Upholstered Cushioned Seat
- \* Single Lock Syncro Mechanism
- \* Height Adjustable Armrest with polyurethane Pad
- \* Powdercoated Steel Base

OPR-814



- \* Mesh Fabric for the Back
- \* Jute Fabric Upholstered Cushioned Seat.
- \* Single Lock Syncro Mechanism.
- \* Polyurethane Head rest for better Support.
- \* Height Adjustable Armrest with polyurethane pad.
- \* Powdercoated Steel Base.

OPR-822



- \* Mesh Fabric for the Back
- \* Jute Fabric Upholstered Cushioned Seat.
- \* Single Lock Syncro Mechanism.
- \* Polyurethane Tilting Head rest for better Support.
- \* Height Adjustable Armrest with polyurethane pad.
- \* Powdercoated Steel Base.

OPR-821



- \* Jute Fabric Upholstery for Better Comfort and Aesthetic.
- \* Single Lock Syncro and Multi Lock Knee Tilt Syncro Mechanism Options.
- \* Ergonomic Shape for Good Back Support.
- \* Height Adjustable Armrest with Polyurethane Pad.
- \* Chrome Plated Steel Base.

Single Lock Syncro Mechanism

Multi Lock Knee Tilt Mechanism

DFN-181S

DFN-181S4



DFN-182S

Medium Back



DFN-184S

SS Low Back

- \* Jute Fabric Upholstery for Better Comfort and Aesthetic.
- \* Single Lock Syncro Mechanism.
- \* Ergonomic Shape for Good Back Support.
- \* Height Adjustable Armrest with Polyurethane Pad.
- \* Powdercoated Steel Base.



- \* Genuine Leather Upholstery.
- \* Knee Tilt Multi Lock Syncro Mechanism.
- \* Ergonomic Shape for Good Back Support.
- \* Chrome Plated Armrest with leather Upholstery for aesthetics and comfort.
- \* Chrome Plated Steel Base.



- \* 1200 x 600 x 750mm
- \* 3 Drawer Unit with Lock
- \* 60mm Dia Wire Manager Grommet

**SHADE OPTIONS**



HIGHLAND PINE



WENGE



- \* 1200 x 600 x 750mm
- \* 18mm Board For Table Top,Modesty panel and CPU Stand.
- \* 60mm Dia Wire Manager Grommet
- \* Frame made of 50x25 16g Rectangular ERW tube in combination of 25x25 16g ERW Square Tube Duly Powdercoated.



- \* 1200 x 600 x 750mm
- \* 3 Drawer Unit with Lock
- \* 60mm Dia Wire Manager Grommet

ELT-831

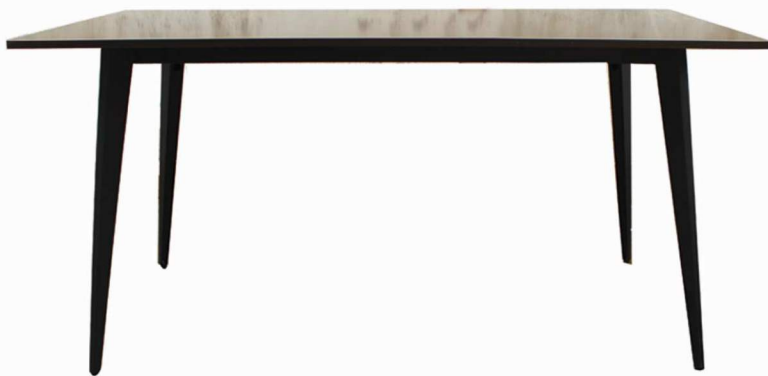
SHADE OPTIONS



HIGHLAND PINE



WENGE



- \* 1200 x 600 x 750mm
- \* 18mm Board For Table Top.
- \* MS Leg Frame Duly Powderocated.

EIT-001





- \* Using Dual Motor with Anti Collision sensors and safety control.
- \* Load Capacity:  
Dynamic - 120kgs | Static - 200kgs
- \* Table Top - 1200mm x 680mm x 18mm
- \* Height Adjustability - 710mm to 1170mm

## Table Accessories:



Footrest



Safe Drawer



Safe Drawer  
with Touchpad combination



CPU Trolley



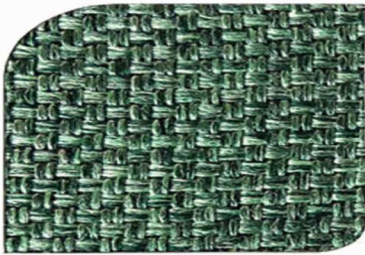
Flat Screen Holder  
Single Arm



Flat Screen  
Holder  
Single Arm  
Twin

\* Subject to availability of stock

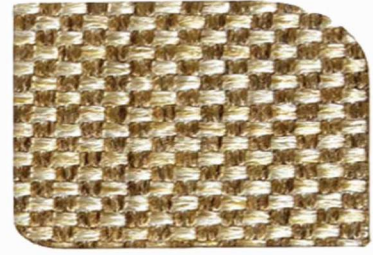
**PREMIUM FABRIC**



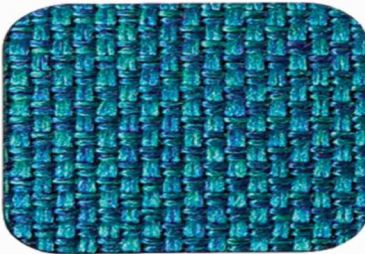
BZCG



BZBLK



BMC



BZTB

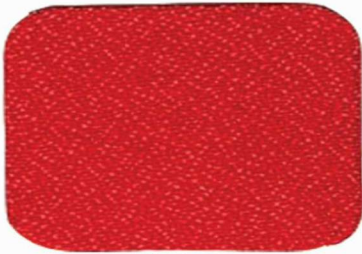


BMRN



BGRY

**STANDARD FABRIC**



E114



E5060



E5080

\*Batch to batch Variations in shade may occur within commercial Tolerances.  
Shade May vary from image to actual.

## To Order:

• **Select the product**

(Prices are inclusive of GST)

• **e-mail us the below mentioned details**

Contact Person

Contact Number

Delivery Address

Product Code and Quantity

• **Mode of Payment - Bank Transfer**

Name of the account : EUROSIT SYSTEMS FURNITURE Account number: 0850261008152

Name of the Bank : CANARA BANK Branch: PEENYA BRANCH IFSC code : CNRB0000850

• **Once the Payment is done Order confirmation will be shared**

• **Delivery : Within 7-14days (Subject to availability)**

## All Products

### OFFICE FURNITURE

Executive Tables | Workstations | Office Chairs

### EDUCATION

### GENERAL SEATING


### HOME FURNITURE

Modular Kitchen | Wardrobes



# 273/1, 4th Main, 8th Cross, 4th Phase, Peenya Industrial Area, Bangalore - 560058  
info@eurositfurniture.com, eurositf@gmail.com | 080 28377260, 28377321, 28377887



 Due to the continuous improvements in the design, the product supplied may have modified features for all the Eurosit Systems Furniture range of Products. Design and dimension may be changed without prior notice or obligation. All dimensions are in metric systems and are approximate.

SINCE 1996